

# SERVOTUBE M4



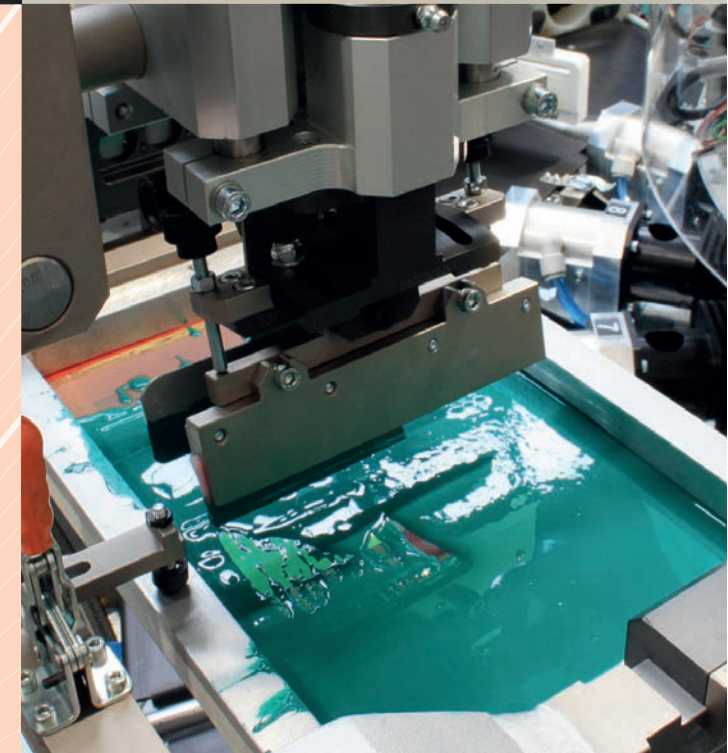
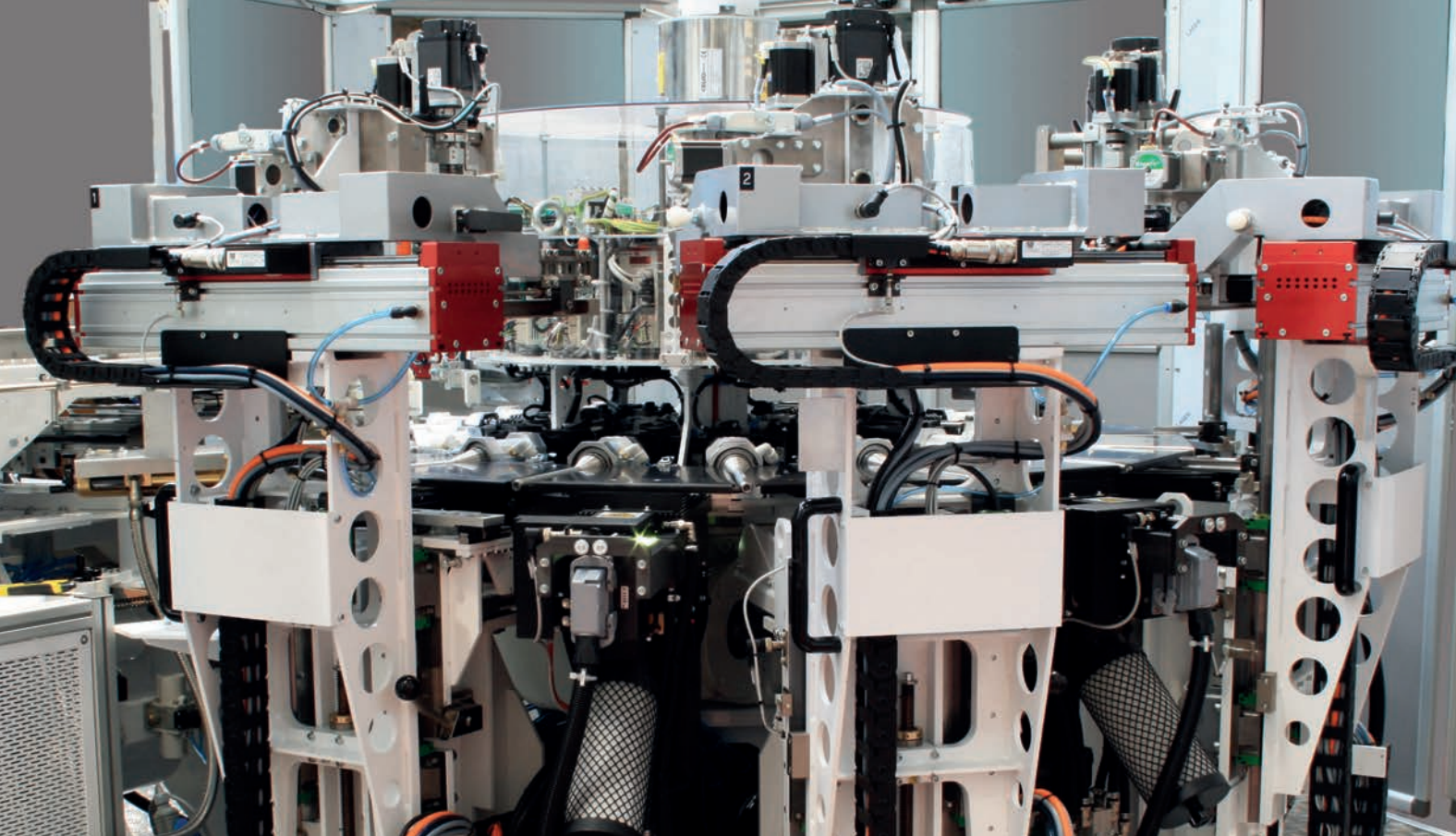
**FLEXO AND SCREEN PRINTING MACHINE  
UP TO 5 COLORS**

FOR TUBES, SLEEVES AND CLOSURES

DECORATION IN MOTION







## PRINT QUALITY

Registration in print groups (max5) is achieved through servo-motors, by electrical timing of all print and container handling axis (loading, unloading, etc.); All used positions are memorized on a menu so they can easily be recalled for a future print.

## VERSATILITY

The machine is extremely flexible, easy to operate and guarantees an excellent color-to-color registration. Machine configuration can be freely and variously determined between flexo screen printing and lacquering up to a maximum of 5 colors. Alternatively, it can be complemented with sealing and capping stations.

## CHANGEOVER

The changeover is fast and secure and, according to the tube, can be done without using any keys or tools. All these features make the Servotube M4 the perfect machine for short-medium runs as well as for long production runs as downtime for changeover is reduced to the very minimum.

## COLOR

Registration between colors is very accurate, since it can ensure tolerances to the minimum, to allow half tone decorations, thanks to registration systems driven by servo-motors. Mandrels are also driven by individual servo-motors (no gear), and allow a very simple and quick change-over.

## UV CURING

Curing is achieved through UV lamps. Stations are available for the application of an inspection system and for the control of the print quality.

## SOFTWARE

The graphic interface dialogues with the operator to guide him in each situation and the sophisticated diagnostic allows the maintenance to intervene accurately. Furthermore the machine is equipped with a remote assistance service to permit immediate support.

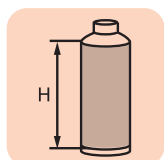
## OPTIONALS

- ◎ PRE-SEARCH WITH CAMERA (1)
- ◎ ANILOX LACQUERING UNIT
- ◎ VISION SYSTEM FOR A HIGH-PRECISION QUALITY CONTROL
- ◎ CAPPING
- ◎ SEALING



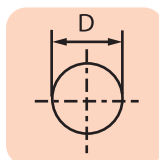


## TECHNICAL DATA

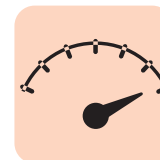


Max Screen printing  
 $\leq 210$  mm

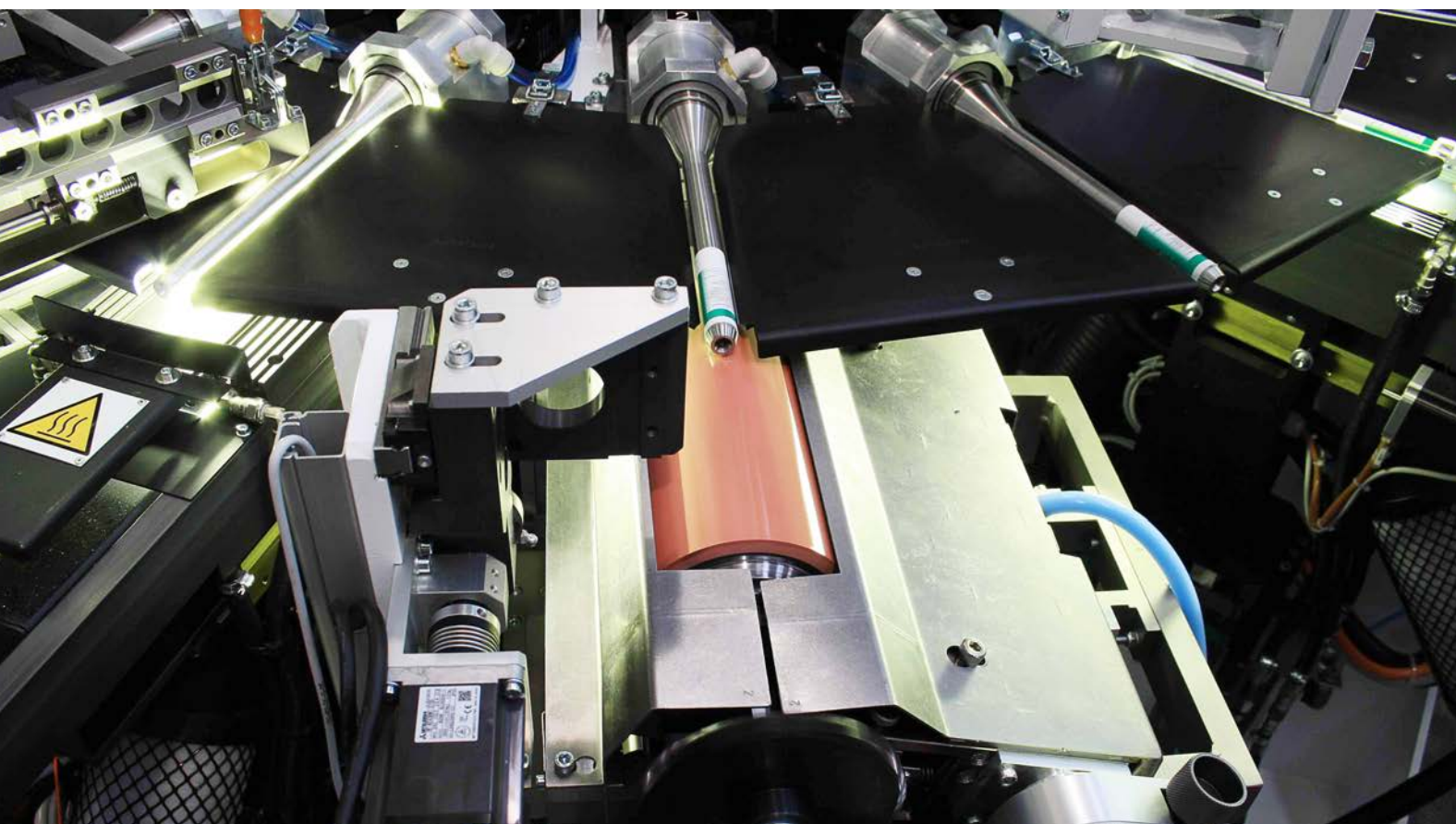
Max Flexo printing  
 $\leq 200$  mm



Min/Max  
 $D: \geq 15$  mm/ $D: \leq 60$  mm



Production speed  
 $120$  p/m  
 (depending on container  
 dimension and quality)



OFFICINA MACCHINE PER STAMPA SU OGGETTI

**OMSO S.p.A.**  
 42124 REGGIO EMILIA  
 Via Adige, 11/E  
 ITALY

Phone +39 0522 382696  
[info@omso.it](mailto:info@omso.it)  
[www.omso.it](http://www.omso.it)