

Ultratube



**FLEXO AND SCREEN PRINTING MACHINE
UP TO 13 COLORS**

FOR TUBES AND SLEEVES

DECORATION IN MOTION





PRINT QUALITY

Flexographic print quality with complete control of all print parameters from the operator panel; Top quality with resolution up to 70 l/cm [180 lpi]. Lowest density down to 1%; very wide dynamic range; Extremely accurate color registration enabled by servo-driven axes, ± 0.02 mm guaranteed for machine life due to total and unique gearless solution.

PERFORMANCE

High printing speed: reliable performances up to 200 ppm, both tubes and sleeves, any diameter and length; Highest speed of any print/dry machine on the market.

UV CURING

Intermediate curing is achieved through water-cooled UV lamps, to keep the tubes at the optimum temperature. The solution is completed by an inspection system for the total control of the decoration quality.

EASY TO USE

Optimal visibility and accessibility. Fast changing due to sleeve mount, off-line registration plate mount jig. Anilox on the sleeve for quick changeover and separatemotor drive, no gear. Automatic pressure adjustment for consistent inking and long blade life. Stainless steel peristaltic pump feeds ink for normal productions, open ink cup for small lots. Possibility of "on-the-fly" adjustments while the machine is running.

COLORS

Up to 13 colors. Unlimited decoration possibilities with direct print, any kind of effect [metallic, relief, frost, lacquer. ...]

SOFTWARE

The graphic interface dialogues with the operator to guide him in each situation and the sophisticated diagnostic allows the maintenance to intervene accurately. Furthermore the machine is equipped with a remote assistance service to permit immediate support.

HD/FULL HD FLEXO PRINT



TRADITIONAL PRINT



INTENSE COLOR AND HIGH MAXIMUM DENSITY



CRISP DETAILS, VIBRANT CONTRAST



DENSITY REPRODUCTION DOWN TO ZERO

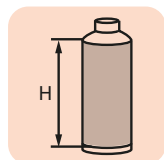


SOFT TRANSITION

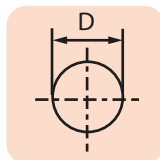




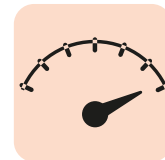
TECHNICAL DATA



Max print
height: $\leq 220\text{mm}$

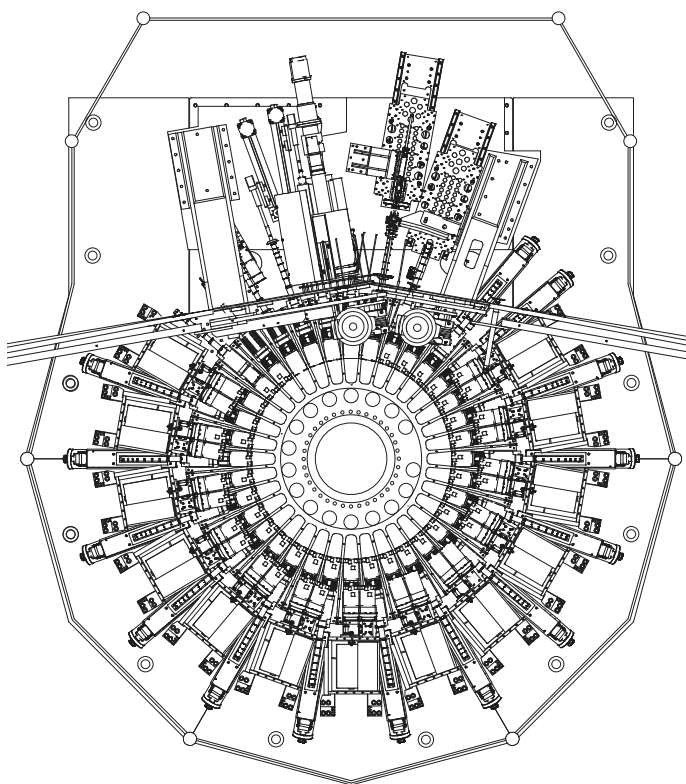


Min/Max
D: $\geq 16\text{mm}$ D: $\leq 60\text{mm}$



Production speed
200 p/m
(depending on container
dimension and quality)

POSITION	OPERATION	COLOR
1	Load 1	
2	Load 2	
3	Load 3	
4	Deionizing	
5	Treatment	
6	Flexo 1	White 1
7	UV 1	
8	Flexo 2	White 2
9	UV 2	
10	Flexo 3	Yellow
11	UV 3	
12	Flexo 4	Cyan
13	UV 4	
14	Flexo 5	Magenta
15	UV 5	
16	Flexo 6	Black
17	UV 6	
18	Flexo 7	Spot 1
19	UV 7	
20	Flexo 8	Spot 2
21	UV 8	
22	Flexo 9	Text 1
23	UV 9	
24	Flexo 10	Text 2
25	UV 10	
26	Flexo 11	Metallic
27	UV 11	
28	Flexo 12	Lacquer matt
29	UV 12	
30	Flexo 13	Lacquer gloss
31	UV 13	
32	UV 14	
33	Inspection	
34	Unloading1	
35	Unloading2	
36	Free	



POSITION	OPERATION	COLOR
1	Load 1	
2	Load 2	
3	Load 3	
4	Deionizing	
5	Treatment	
6	Flexo 1	White 1
7	UV 1	
8	Flexo 2	Yellow
9	UV 2	
10	Flexo 3	Cyan
11	UV 3	
12	Flexo 4	Magenta
13	UV 4	
14	Flexo 5	Black
15	UV 5	
16	Flexo 6	Orange
17	UV 6	
18	Flexo 7	Green
19	UV 7	
20	Flexo 8	Spot 1
21	UV 8	
22	Flexo 9	Text 1
23	UV 9	
24	Flexo 10	Metallic 1
25	UV 10	
26	Flexo 11	Metallic 2
27	UV 11	
28	Flexo 12	Lacquer matt
29	UV 12	
30	Flexo 13	Lacquer gloss
31	UV 13	
32	UV 14	
33	Inspection	
34	Unloading1	
35	Unloading2	
36	Free	



OFFICINA MACCHINE PER STAMPA SU OGGETTI

OMSO S.p.A.
42124 REGGIO EMILIA
Via Adige, 11/E
ITALY

Phone +39 0522 382696
Fax +39 0522 301618
info@omso.it
www.omso.it